

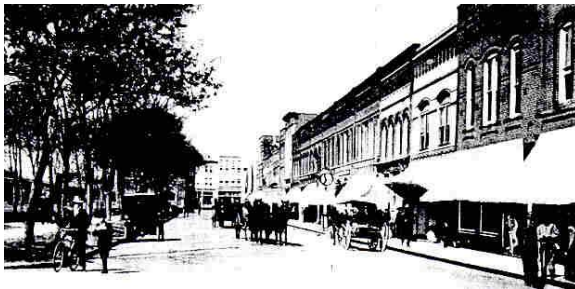
**CENTER CITY HICKORY MASTER PLAN & ONE-WAY STREET ANALYSIS  
HICKORY, NC  
IN COLLABORATION WITH TOM LOW, DUANY PLATER-ZYBERK, INC.**

**HPE RESPONSIBILITY:**

Mobility assessment and conceptual transportation design recommendations

**CLIENT'S NAME & ADDRESS:**

Thomas E. Low  
AIA CNU LEED AICP NCARB  
119 Huntley Place  
Charlotte | North Carolina | 28207  
704 996-0349  
tomdpz@mindspring.com



Hall Planning & Engineering, Inc. participated as a subconsultant with DPZ in a series of charrette workshops focused on the Downtown Hickory Master Plan. HPE analyzed existing travel and streets to enhance walkability. Goals included increasing access while, at the same time, reducing traffic speeds to increase pedestrian comfort and safety.

In doing so, HPE analyzed the configuration of Hickory's downtown streets, previously set for one way operation to maximize speed and increase capacity. In fact, both capacity and speed were excessive. Recommendations included re-conversion to two way operation and increases in on street parking to better serve businesses and pedestrian mobility. US 70 and I-40 provide extensive east/west capacity previously needed within the downtown grid street network.

Speed management was specified via narrower lanes, more on street parking and added street trees. Vehicle miles traveled were projected to drop based on added walking, biking and reduced extra circulation. Connections to the surrounding arterial network were carefully designed to transition from the urban commercial to the suburban context.

**Spot Speed Survey (Counter #6)**

Ponce de Leon east of Town Hall

