

**STREET IMPROVEMENT PROJECT FOR JEDDAH, SAUDI ARABIA  
JEDDAH MUNICIPALITY, IN COLLABORATION WITH DOVER, KOHL & PARTNERS**

**HPE RESPONSIBILITY:**

Traffic studies, charrette participation, street redesign, revise design standards for 38 km of local streets

**CLIENT'S NAME & ADDRESS:**

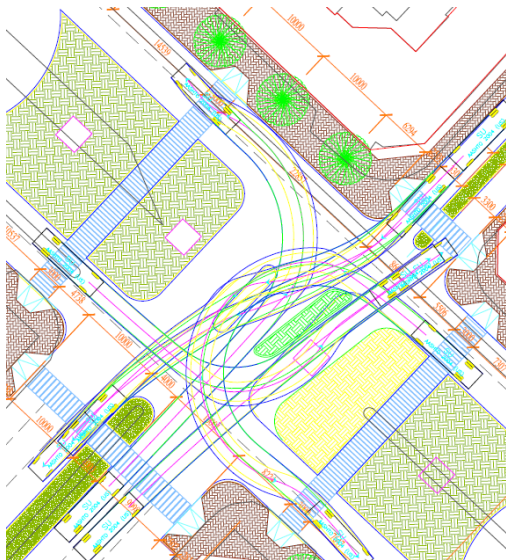
City of Jeddah  
Kingdom of Saudi Arabia

Hall Planning & Engineering, Inc. participated as a subconsultant with Dover, Kohl & Partners, Inc., to provide new street design and streetscape standards for 6 major streets (approximately 38 km) in Jeddah, Saudi Arabia.

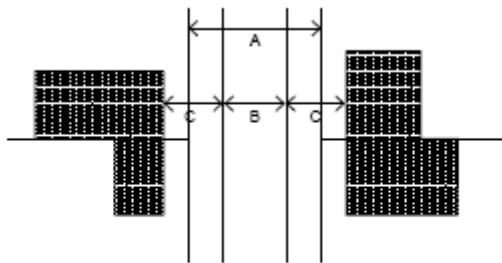
HPE participated in a nine day charrette in Jeddah, analyzing local traffic conditions (speed, volume, walkability) and providing expertise in walkable street design. HPE worked with local traffic engineering staff and other public works officials to calibrate walkable street design (traditional neighborhood design thoroughfares) with local traditional standards.

Results included the following:

- New typical sections for walkable residential thoroughfares
- Design to improve walkability along major corridors
- Design of controlled-access intersections along Old Makkah Road
- Recommendations for security provisions along royal limousine routing, including blast walls and access provisions



HPE Conducted AutoTurn Analyses to Test Walkability and Vehicle Access at Key Intersections



**Figure 3.5: How to measure alleys**  
A= Alley pavement (4-7 meters)  
B= Alley right-of-way (7-8 meters)  
C= Building setback (minimum 1.5 meters)

Recommendations for Alley Design