

**DOWNTOWN RICHMOND MASTER PLAN, RICHMOND VA
CITY OF RICHMOND IN COLLABORATION WITH DOVER, KOHL & PARTNERS**

HPE RESPONSIBILITY:

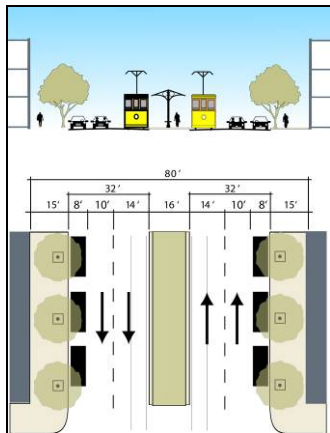
Transportation Planning and Street Design in the Downtown Richmond Master Plan Area

CLIENT'S NAME & ADDRESS:

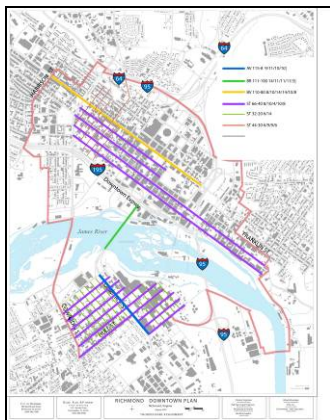
Rachel O'Dwyer Flynn, Director
City of Richmond Community Dev. Dept.
900 E. Broad Street, Room 511
Richmond, VA 23219
Phone: (804) 646-6310
email: rachel.flynn@richmondgov.com

Hall Planning & Engineering, Inc. participated as a subconsultant with Dover, Kohl & Partners, Inc., to create a new Master Plan for downtown Richmond, VA. The plan provided strategies for revitalizing the existing downtown and infilling a mature industrial portion of Richmond. HPE provided transportation planning services, including street design to maximize walkability and transit access in the corridor.

HPE participated in a nine day charrette in Richmond, conducting speed studies, measuring street dimensions, analyzing traffic flow and data, and talking with local officials including transit, police, fire, and traffic engineering. HPE also toured the downtown on bicycle to better understand issues facing cyclists as part of the downtown plan.



HPE Developed Walkable Thoroughfare Sections to Retrofit Existing Streets for Multimodal Transportation



Thoroughfare Assignment Map Tied Walkable Thoroughfares to Specific Locations in the Plan

Results included the following:

- Creation of new street sections to guide the redevelopment of the corridor, in keeping with the Dover Kohl land use plan
- Recommendations for design and phasing of streets in the new Master Plan to create high levels of walkability
- Analysis of one-way pair operations compared with two way street operation for effects on VMT, circulation, and economic development
- Plans including bicyclists in the transportation system
- Recommendations for transit system operations and integration of potential street car service re-start
- Recommendations for parking management